

Standard features for Proline^{Plus} System

- 50 GPD High Rejection TFC Filmtec™ Membrane
- NSF Listed 4 Gallon Storage Tank with Stainless Steel Port & Original JG Heavy Duty Ball Valve
- Quick Connect Fittings Featuring SafeLock™ Clips
- With ProFlush™ to Enhance Membrane Performance
- Attractive Euro-Soft Extra Tall Faucet
- Automatic Shut-off Valve (when tank is full)
- Built-in Pressure Gauge for Performance Monitoring
- Color Coded Tubing for Easier Installation
- Inlet Feed Ball Valve for Easier Maintenance
- Complete Installation Kit and Instructions Manual
- 5-Year Limited Warranty
- Made of High Quality Certified & Listed Parts and Components



Options for Proline^{Plus} System

1. In-line UV Lamp, 1.0-2.0 GPM
2. Plastic Storage Tank, 4 gallon
3. Air-Gap, Colored Faucets, or Designer Faucets*
4. Additional Stages such as DI, KDF, and/or Mineral Filters
5. TDS Monitor
6. 11 Gallon Storage Tank
7. Aquatec Permeate Pump
8. Delivery Pump
9. 75 or 100 GPD Membrane
10. Private Labeling

CONSULT OUR SALES DEPARTMENT FOR MORE INFORMATION

| MODEL | PRODUCTION GPD (LPH)* | PRODUCT RECOVERY | TDS REJECTION* | SYSTEM DIMENSIONS (WXDXH) INCHES (CM) | TANK DIMENSIONS (DIAxH) INCHES (CM) | SHIPPING WEIGHT LBS (KG) | SHIPPING DIMENSIONS INCHES (CM) |
|----------|-----------------------|------------------|----------------|---------------------------------------|-------------------------------------|--------------------------|---------------------------------|
| PROLINE+ | 50 (7.9) | 25-30% | 94-99% | 16x5.5x18 (41x14x46) | 11.5x16 (29x40) | 31 (14.1) | 21x19x19 (54x48x48) |

*At 75° F, and 300 PPM TDS Feed, based on 24 hours continuous operation. Results may vary.

Distributed By:



*Picture shown with optional designer faucet

© Waterworld USA, Inc. 2013

Proline^{Plus}

ULTRA CLEAN WATER MACHINE



Enjoy



Pure and Healthy Water for Drinking, Cooking, Ice Making, Coffee & Tea, Food Processing, Pets & Plants...



... At Homes, Offices, Schools, Restaurants, & Laboratories.

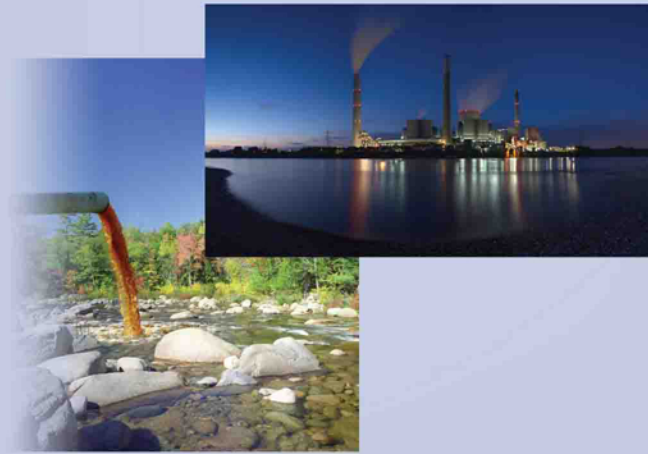
For Every Day Life!



How is water contaminated?

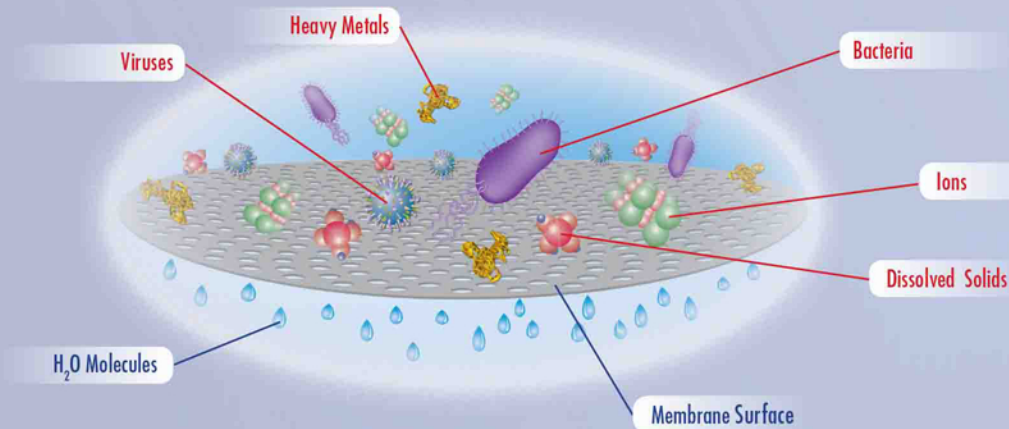
Being the world's universal solvent, water constantly dissolves and absorbs contaminants while traveling miles from its source to you.

Contaminants such as Heavy Metals, Salts, Dissolved Solids, Bacteria, and sometimes viruses may find their way in to your water supply.



How does reverse osmosis work?

With the **Proline^{Plus}** purification technology and breakthrough engineering, it is the finest level of filtration available.



FYI: Beach sand is about 50 Microns

Water pressure forces smaller H₂O molecules through very tiny semi-permeable membrane pores, which measure 0.0001 microns. This acts as a barrier to contaminants, which are rejected by the membrane and flushed down the drain.

Proline^{Plus} The Pure Water Machine, incorporates a Complete 5-stage water treatment & purification system:

Stage 1

5 Micron polypropylene sediment pre-filter to extract suspended materials such as sediments, rust, insects, and other particles down to 5 micron.

Stages 2 & 3

Double carbon block filters to absorb heavy chlorine and chlorine by-products such as chloramine, THM, and TCE. The double carbon briquettes filter out organic matter from water without release of carbon fines. The carbon block prepares water to enter the reverse osmosis element.



Stage 4

FILMTEC High rejection (95-99%) Thin Film Composite (TFC) RO membrane 50 GPD to reject a wide spectrum of impurities including Total Dissolved Solids (TDS), heavy metals, bacteria, & viruses.

Stage 5

In-line Coconut Shell GAC filter is used to remove dissolved gases, bad taste and odor from product water. This is the polishing stage before consumption.



Dependable

Convenient

On the Go!

Save time and Money!

Instead of wasting time and money on buying and carrying safe drinking water, invest in your own pure water machine. The crisp taste of pure water from your **Proline^{Plus}** drinking water system is very economical and costs pennies per gallon.



Connect to ice-maker for clear ice cubes.



At your fingertips, always pure and always fresh.

Proline^{Plus} The Pure Water Machine is Reliable!

- Years of trouble free operations.
- Consistent pure water supply.
- Heavy duty construction.
- All 5 stages have gone through rigorous testing and validation/certification by well recognized 3rd party agencies.
- Exceeding industry standards in performance.
- Backed by our exclusive 7-year limited warranty.

